

Magazine Catch (Release) for Left – Handed Shooters Gen.2 for

- **2011 STI grip frame (PN 01.108)**
 - **Pistols with plastic STI grip frame incl. STI, Staccato Gen.1 and others**
 - **Rock Island Armory (RIA) TAC Ultra FS HC 9MM**
 - ***Not for Aluminum grip frames deviating in design and size (→ PN 01.115)***

- **2011 BUL grip frame (PN 01.109) incl.**
 - **BUL SAS II**
 - **BUL SAS II Radical**
 - **BUL SAS II Bullesteros**

Thank you for choosing a high-quality **TECTAL** product!

The *magazine catch for left - handed shooters* is 100% “Made in Austria“ and offers the following benefits:

- ✓ Gen.2 optimized release button

- ✓ This *magazine catch for left-handed shooters* was developed and is manufactured from the ground up as such. All parts are designed to be as robust as possible within the confined space available.

- ✓ All parts are machined from high-quality, alloyed steel and surface treated respectively machined from stainless steel. Bolts and pin are made from stainless steel.

- ✓ Pre-assembled and ready-to-mount, including the *Light Magazine Catch Spring for 1911 / 2011 (PN 01.110)* from TECTAL

- ✓ Mounts to the grip frame using two retention points

- ✓ Does not require any permanent changes to the gun



Supplied Parts:

- 1 pc. *TECTAL Magazine Catch for Left-Handed Shooters for 2011, pre-assembled and ready-to-mount, PN 01.108 or PN 01.109*

The installation requires the partial disassembly of the gun. It is recommended to have PN 01.108 / 01.109 installed by a gunsmith familiar with this pistol.

Tools required:

- Centerpunch for mainspring housing pin
- Plastic benchblock
- Small, flat bladed screw driver for the standard mag catch screw
- Allen key for buttons / tabs attached to the standard mag catch (if fitted, typically imperial size)
- Allen key 1,5mm – long, with spherical head
- Allen key 2,5mm

INSTALLATION - PREPARATION

1. **Before maintaining or working on any firearm always ensure that it is unloaded and safe!**

While pointing the firearm in a safe direction remove any magazine from the firearm and ascertain it is unloaded by locking the slide to the rear and visually inspecting the chamber before working on or cleaning it! If loaded follow the proper procedures to unload the firearm safely!



Firearms Safety is your responsibility!

The following steps which precede the actual installation of the *magazine catch for left - handed shooters* are described in an abbreviated manner as they are identical to those of a standard strip-down of a 1911 / 2011 for in-depth maintenance. If so required, consult the manufacturer's manual or suitable reference material in addition.

2. Separate the slide from the frame – all further steps require the frame / grip frame only
3. Cock the hammer and remove the safety lever(s). The typical position in which first the left (when viewed from behind) safety lever can be detached is between the „Fire“ and „Safe“ position. If fitted, also remove the right safety lever.
Take care not to remove or loose the plunger and spring assembly of the left safety lever / slide stop!
4. De-cock the hammer – removal of the hammer, disconnecter etc. is NOT necessary!

ATTENTION:

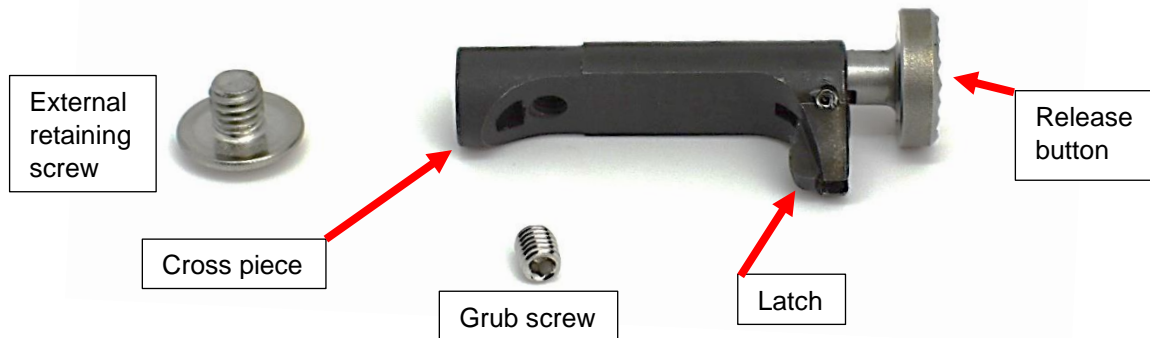
→ *When de-cocking, grip the hammer firmly and lower it slowly. DO NOT let it drop to avoid damage to the components.*

5. Remove the mainspring housing pin with a suitable centerpunch while supporting the frame with a benchblock
6. Remove the magwell, if fitted

7. Pull out the mainspring housing
8. Remove the grip safety
9. Remove the sear spring
10. Remove the standard mach catch; If fitted, undo the screw and remove any button or tab attached to the standard mag catch. The mag catch must be slightly depressed and the mag catch screw turned counter-clockwise to unlatch. In the correct, slightly depressed position of the mag catch the screw will turn without any noticeable resistance – do not use force!

INSTALLATION

1. Remove the loosely pre-installed, external retaining screw and grub screw from the *magazine catch* for left - handed shooters

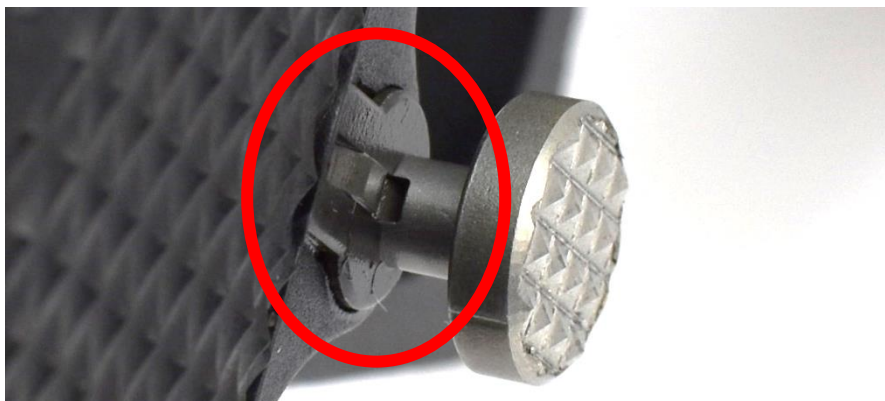


2. Insert the *magazine catch* into the opening in the grip frame and push it in until the retention shoulder is seated against the grip frame



ATTENTION:

*When installed properly, the magazine catch will - by design - protrude slightly from the grip frame on the release button side! **DO NOT** force it into the grip frame and **DO NOT** pull it into the grip frame with the retaining screw!*



3. Insert and tighten the external retaining screw until the screw head rests evenly against the grip frame and the magazine catch is securely retained in position!

ATTENTION:

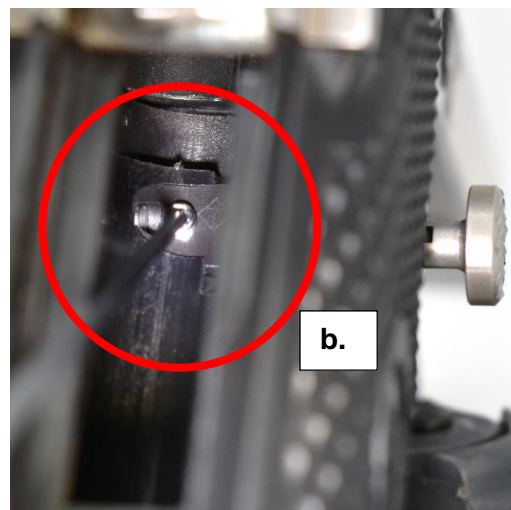
The external retaining screw MUST NOT be tightened using any force! This will cause damage to the grip frame and / or the magazine catch!

4. Conduct a first test with the *magazine catch* for left-handed shooters now having been provisionally installed in the grip frame by using an **empty (!)** magazine:
- The magazine catch must engage and safely retain the magazine.
 - The magazine shall drop free / be freely removeable upon fully depressing the release button.
- If not, see p.8 „Remedial Action“
5. When proper function acc. to step 4. is ascertained the *magazine catch* can be fully installed in the grip frame:

- a. Remove the external retaining screw, apply Loctite 243 (blue) or a comparable, non-permanent thread locker and reinstall according to step 2. until the screw head rests evenly against the grip frame and the *magazine catch* is securely retained in position.



- b. Apply Loctite 243 (blue) or a comparable, non-permanent thread locker to the grub screw. Using a long Allen key with a spherical head position it through the opening in the back of the grip frame and tighten it in the cross piece until noticeable resistance can be felt. The cup point of the grub screw shall engage the material of the grip frame to ensure safe retention of the *magazine catch*.



Use of thread locker:

- Observe the manufacturer instructions for the correct use of the thread locker!
- Use the thread locker sparingly (~ 2 thread turns - do not cover the whole threaded length of the screws!) to ensure that the external retaining screw and the grub screw can be unthreaded again for maintenance!

6. Re-check function acc. to step. 4, after finishing the installation

7. Re-assemble the gun in reverse order

8. Check function with a fully loaded magazine **on the shooting range while observing the appropriate safety rules.**



The force required to depress the release button will increase with a fully loaded magazine inserted against a closed slide. The use of magazines loaded beyond the design capacity as specified by the manufacturer is not recommended.

To reduce the force required for actuation and potential wear on the *magazine catch* a fully loaded magazine shall be ejected as follows:

1. Lightly push the magazine into the gun to reduce the force acting on the latch.
 2. Depress the release button fully.
 3. Let the magazine slide out / remove the magazine.
- The magazine shall drop free / be freely removeable upon fully depressing the release button.
 - If a fully loaded magazine can only be removed by exerting very high pressure on the release button despite following all of the above see p.8 „Remedial Action“.

Remedial Action

If an empty magazine is not fully released despite a fully pressed release button or if a fully loaded magazine can only be removed by exerting very high pressure on the release button it may be necessary to minimally reprofile the front portion of the release latch (→ red bracket) using a suitable, small grinding tool.



This may especially be the case with worn or cheaply made, unprecise grip frames in which the retaining shoulder is insufficient to correctly position the *magazine catch*.

- It is strongly recommended to carefully consider the actual necessity of any modification. If such work is undertaken, proceed carefully in very small steps and test for function after each step to achieve the best result for function and magazine retention.
- Dust and metal chips shall not enter into the notches of the *magazine catch* to avoid any impact on its proper function.
- Subsequent installation as per the instruction manual.

NOTES ON INSTALLATION, USE AND MAINTENANCE

INSTALLATION



The installation requires the partial disassembly of the gun. It is recommended to have PN 01.108 / 01.109 installed by a gunsmith familiar with this pistol.



When de-cocking the hammer with the slide removed, grip the hammer firmly and lower it slowly. **DO NOT** let it drop to avoid damage to the components.



When installed properly, the magazine catch will - by design - protrude slightly from the grip frame on the release button side! **DO NOT** force it into the grip frame and **DO NOT** pull it into the grip frame with the retaining screw!



The external retaining screw **MUST NOT** be tightened using any force! This will cause damage to the grip frame and / or the *magazine catch*! Insert and tighten the external retaining screw only **until the screw head rests evenly against the grip frame and the *magazine catch* is securely retained in position!**

USE

The *magazine catch for left - handed shooters* for 2011 pistols is intended for sporting purposes only.

MAINTENANCE

The release button as well as the latch shall be lubricated regularly where they contact the cross piece during routine maintenance of the gun to prevent unnecessary wear.

The cross piece as well as the latch are surface treated but not made from stainless steel. Their surface shall be very lightly oiled regularly in order to renew the corrosion protection film especially following exposure to humid conditions or after cleaning.

The *magazine catch* is not designed to be taken out of the gun regularly. A full disassembly of the *magazine catch* is not recommended to prevent damage to its components.

It is neither necessary nor recommended to use aggressive solvents or abrasive tools for cleaning!

The surfaces of the treated parts may show process related, uneven colouring or minute bare spots.

All components are subject to wear especially on exposed surfaces and edges as well as on functional surfaces.

Process related uneven colouring and minute bare spots as well as installation and usage related wear are not considered a product defect.

In case of any questions please contact us at
office@tectal.at

© 2023 TECTAL GmbH, A-4431 Haidershofen, Austria --- www.tectal.at

This manual or parts thereof may not be used, reproduced or published without express written permission of TECTAL GmbH. TECTAL GmbH reserves the right to product changes and updates at anytime.